

GUITAR

JUST TO KNOW YOU

ARR. CONNOR GALLAGHER

MIKE SMITH

DIRECTED - SLOWLY

SLOW ROCK BALLAD ♩ = 60

16 **(A)** Eb Eb⁹/G C(SUS4) Gb7(b5) Fm7 Bmaj7 Ab/Bb Eb7(b5)/A Abmaj7 D7

21 Gm7 C13 1. Fm7 Eb/G Aø7 Ab/Bb Eb(SUS4) Ab/Bb 2. Fm7 Eb/G Aø7 Ab/Bb Eb(SUS4) Eb Eb7

26 **(B)** Abmaj7 D7(b9) Gm7 C9 Em11 A7 D6 D7(b9)

30 Gm7 C7 F#m7 B7 Fm7 Ab/Bb Bb7 Bb13(b9)

34 **(C)** Eb Eb⁹/G C(SUS4) Gb7(b5) Fm7 Bmaj7 Ab/Bb Eb7(b5)/A Abmaj7 D7

39 Gm7 C13 Fm7 Eb/G Aø7 Ab/Bb Abm7 Bbm Ebm/Cb Fm7 Eb/G Aø7 Ab/Bb

44 **(D)** Eb Eb° Eb Eb Eb⁹/G C(SUS4) Gb7(b5) Fm7 Bmaj7

48 Ab/Bb Eb7(b5)/A Abmaj7 D7 Gm7 C13 Fm7 Eb/G Aø7 Ab/Bb Eb(SUS4) Ab/Bb

2

GUITAR

53 Eb Eb⁹/G C(SUS⁴) Gb⁷(b⁵) F_m⁷ B^{ma}₇ Ab/Bb Eb⁷(b⁵)/A Ab^{ma}₇ D⁷ G_m⁷ C¹³

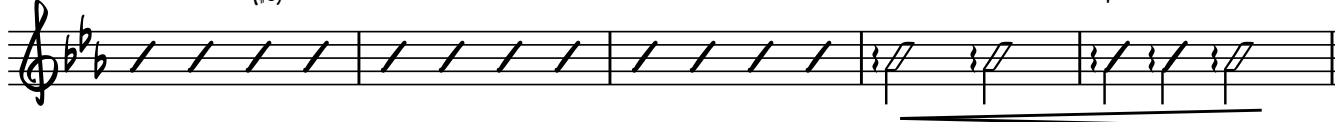


(E)

59 F_m⁷ Eb/G A^ø₇ Ab/Bb Eb(SUS⁴) Eb Eb⁷ Ab^{ma}₇ D⁷(b⁹) G_m⁷ C⁹ E_m¹¹ A⁷



64 D⁶ D⁷(b⁹) G_m⁷ C⁷ F[#]_m⁷ B⁷ F_m⁷ Ab/Bb Bb⁷ Bb¹³(b⁹)



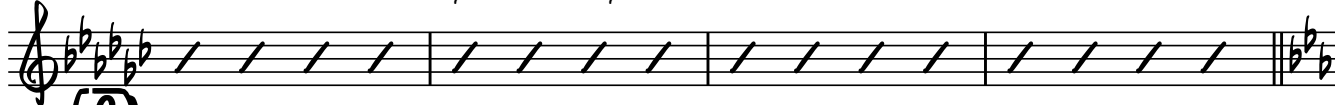
69 Eb Eb⁹/G C(SUS⁴) Gb⁷(b⁵) F_m⁷ Cb^{ma}₇ Ab/Bb Eb⁷(b⁵)/A Ab^{ma}₇ D⁷ G_m⁷ C¹³



75 F_m⁷ Eb/G A^ø₇ Ab/Bb Ab_m⁷ Gb/Bb C^ø₇ (F) Gb Gb⁷ Eb(SUS⁴) A⁷(b⁵)



79 Ab_m⁷ D^{ma}₇ Cb/Db Gb⁷(b⁵)/C B^{ma}₇ F⁷ Bb_m⁷ Eb¹³



(G)

RALL.

SLOWER

83 F_m⁷ Eb/G A^ø₇ Ab/Bb Ab_m⁷ Bb_m Eb_m/Cb // B^{ma}₇¹³(#11) Eb⁹ Eb⁹(#11)



< > < > < >